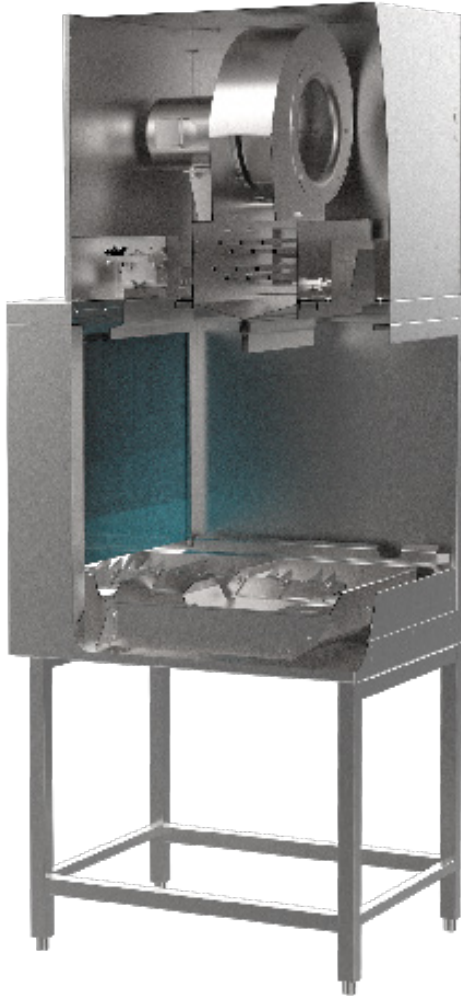


33BD-PRO

BLOWER-DRYER FOR RACK CONVEYORS



Rendered image is for general visual representation only. Please refer to specifications for the latest detailed product information.



STANDARD FEATURES

- Automatic heat cutoff (when conveyor stops)
- Blower motor, 2-Hp
- Choice of electric or steam heat
- Control circuit, 120-volt, completely interwired with dishwashing machine controls
- Heavy gauge stainless steel frame and cabinet
- Machine vent connection, 7" stack with locking damper. Blowers for VHR dish machines do not have a vent stack
- Thermal overload protection for electrical blower-dryer
- 33" Hood design
- Blowers are available for any size VHR dish machine except for 54, 76, 76FF, and 90VHR.

SPECIFICATIONS

Motor Horsepower	2
Heating	
Electric, (kW)	8
Steam (lbs./hr. required at 10 psi flow pressure)	65

SPECIFIER STATEMENT

Specified unit will be Champion model 33BD-PRO blower-dryer for rack conveyor dishwashing machines. Features include automatic heat cut-off, 2-Hp blower motor.

1 year parts and labor warranty.

This BD catalog sheet is designed to be used in conjunction with the Champion Rack Conveyor Series catalog sheets.

In the USA:

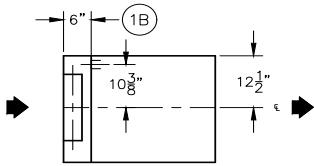
3765 Champion Blvd, Winston-Salem, NC 27105
Tel: (336) 661-1556 Fax: (336) 661-1979
www.championindustries.com

In Canada:

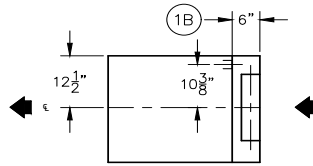
2674 N. Service Rd., Jordan Station, Ontario, Canada LOR1S0
Tel: (905) 562-4195 Fax: (905) 562-4618
www.championmoyerdiebel.ca

Electric

Left to Right



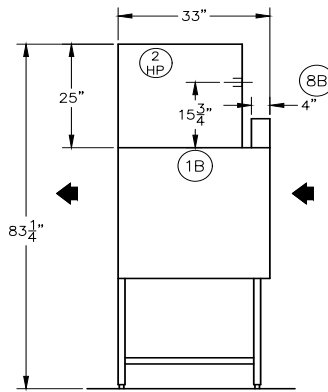
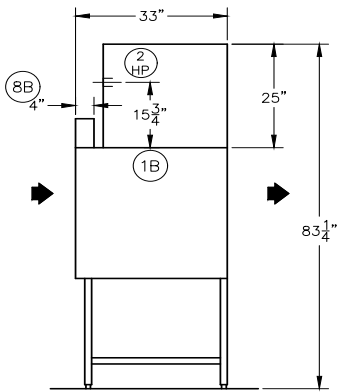
Right to Left



(1B) - Machine main electrical supply (see table below)

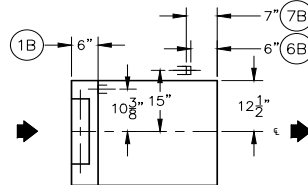
(6B) - Steam (10-30 PSI) Flow Press
3/4" NPT Blower/Dryer
65 lb/hr. Consumption

(7B) - Condensate No Back Pressure
1/2" NPT Blower/Dryer
Return to Boiler

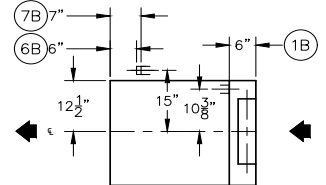


Steam

Left to Right



Right to Left



Model 33BD-PRO Electric Heat			
Elec. Specs	Rated Amps	Minimum Supply Ckt. Conductor Ampacity	Maximum Overcurrent Protective Device
208/60/3	29	40	40
240/60/3	26	35	35
480/60/3	13	20	20
575/60/3	11	15	15

Note: When machine is equipped with blower/dryer system, for normal size dishroom, the dishroom ventilation should be increased by 600 CFM.

Model 33BD-PRO Steam Heat			
Elec. Specs	Rated Amps	Minimum Supply Ckt. Conductor Ampacity	Maximum Overcurrent Protective Device
208/60/3	7	15	15
240/60/3	6	15	15
480/60/3	3	15	15
575/60/3	3	15	15

Note: When machine is equipped with blower/dryer system, for normal size dishroom, the dishroom ventilation should be increased by 600 CFM.

